



Roof Condition Report

Inspection Date: 7/20/1969
Inspection Type: Thermal Image Report



PREPARED BY:

Gross Roofing & Sheet Metal LLC
101 N. Barron St., Ste 203
Eaton, OH 45250
937-456-3024

FACILITY:

Sample
Address
City, State
Building Type: Building Type
Neighborhood: Neighborhood

PREPARED FOR:

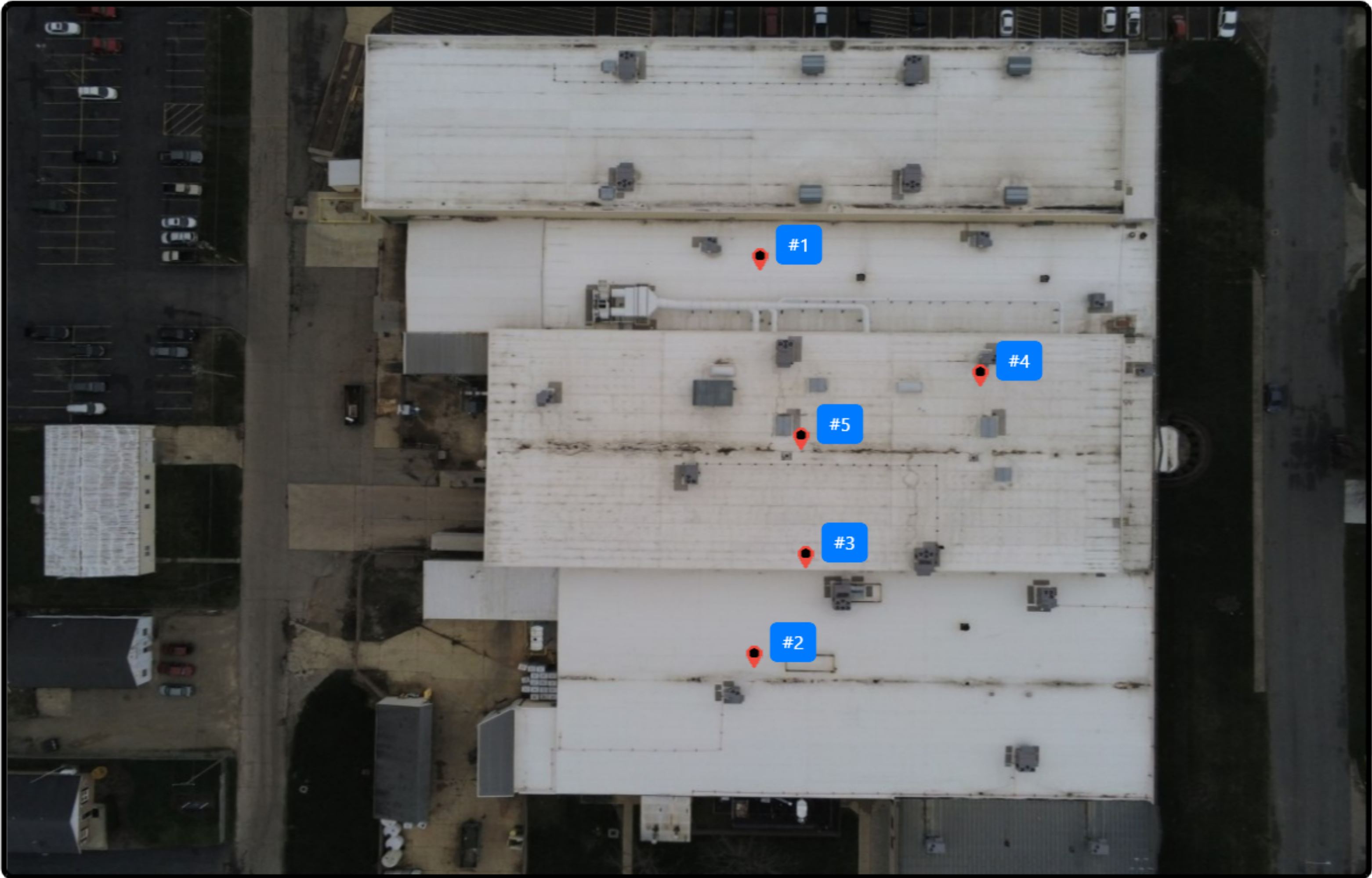
Contact
Title
Company Name
Email@email.com
111-111-1111



Sections Overview

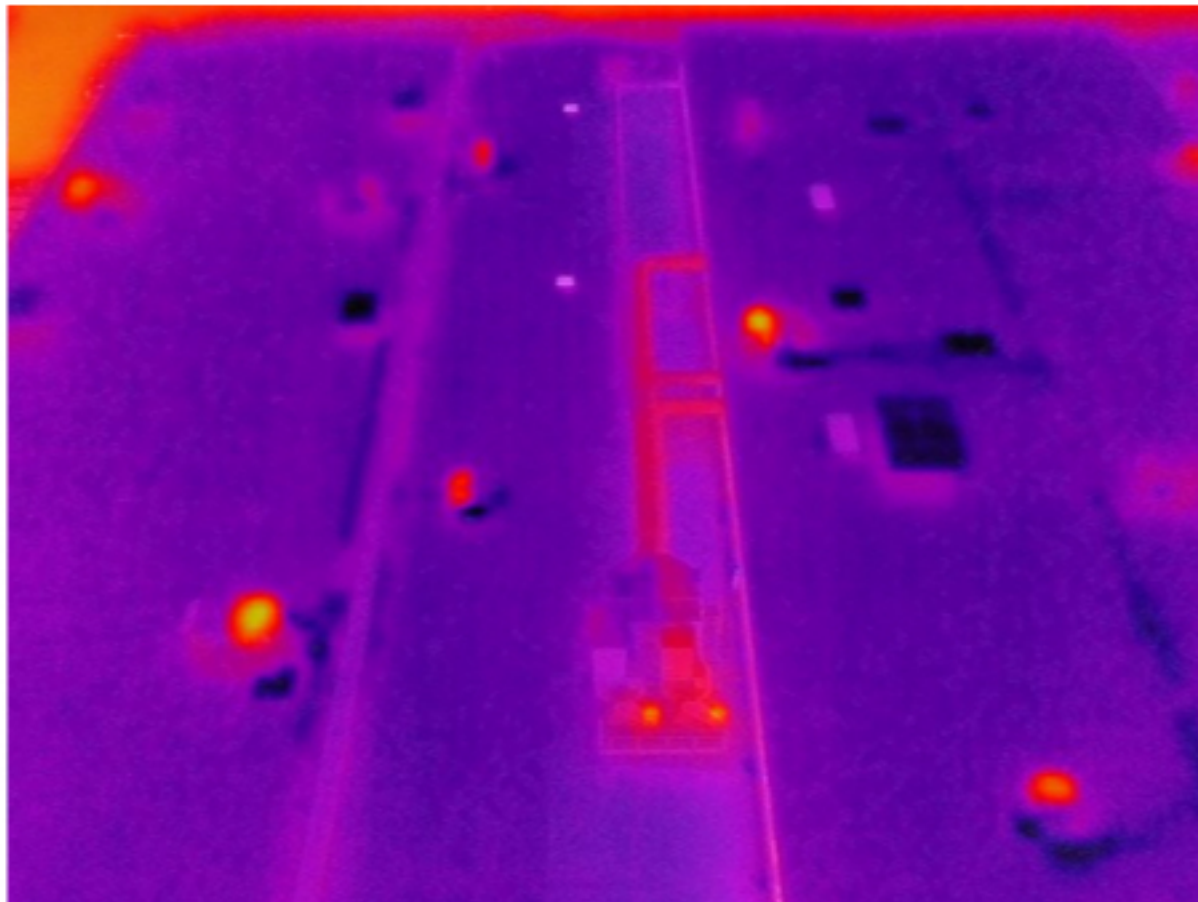
Section	Severity	Section Outcome
Section	Moderate	Section Outcome

Section		
Section Outcome	Severity	Recommendation
Section Outcome	Moderate	The areas that are bright red are active units. The areas with lighter red are where moisture is present under the membrane.



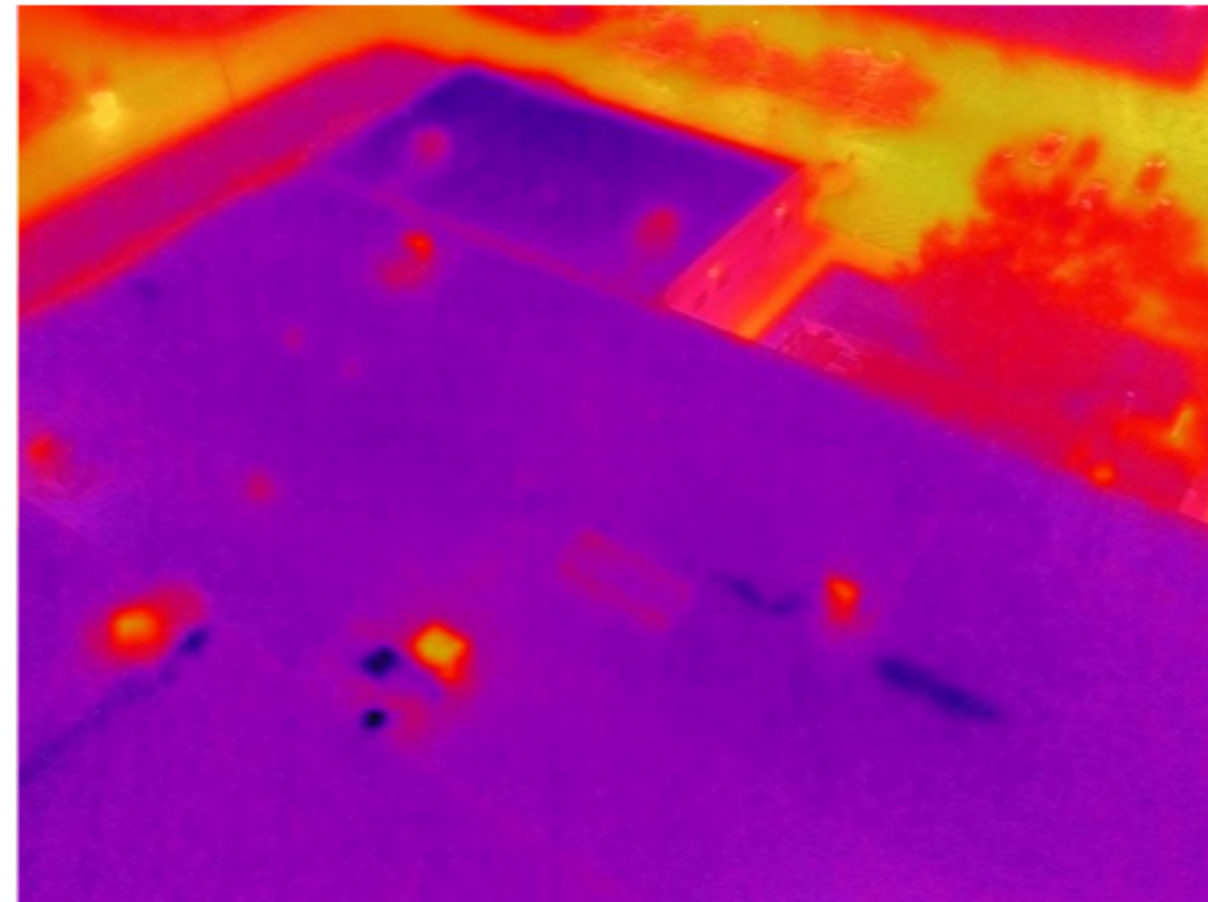
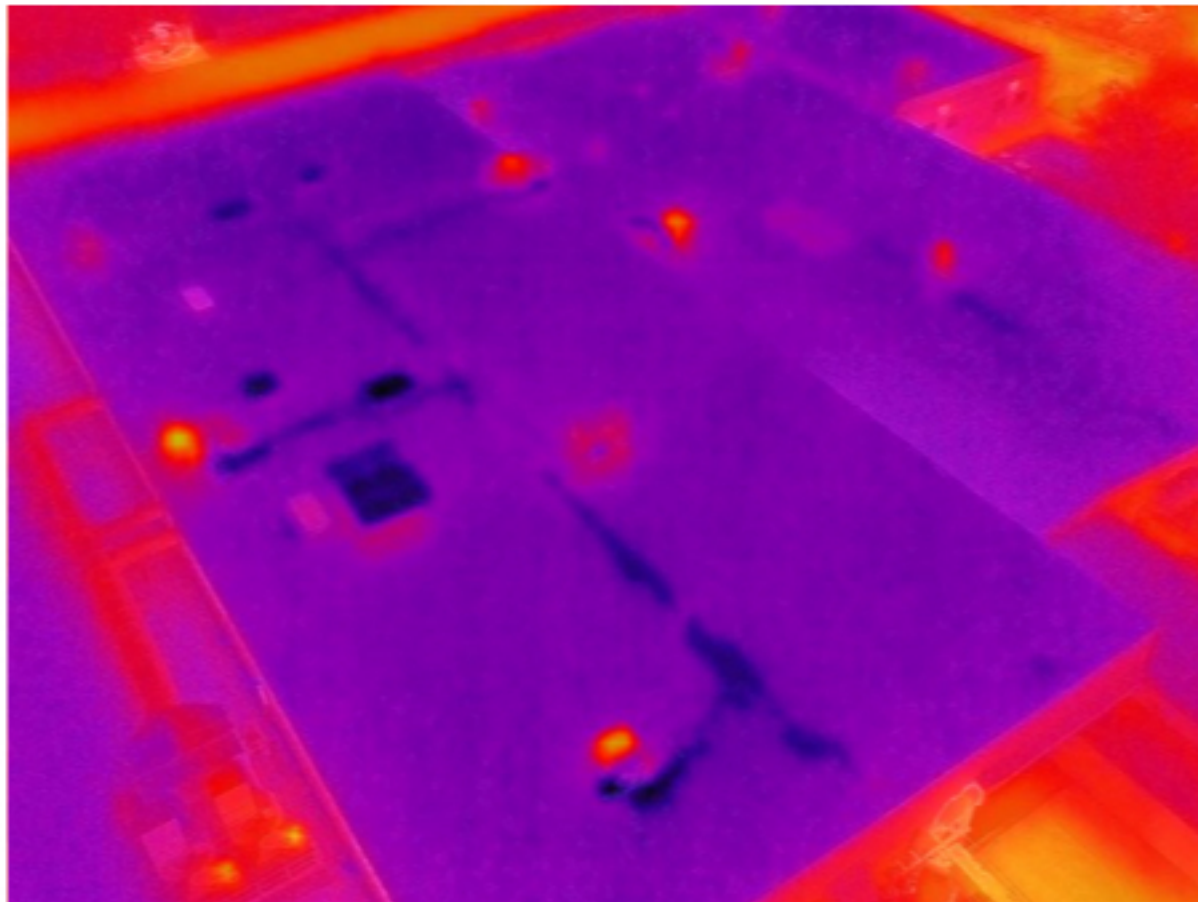
Section Issue #1 Deficiency #1

Deficiency	Description	Deficiency Effect	Severity	Action
Insulation saturation	Saturation of insulation products can be caused when water infiltrates the system at splits or holes in the roof surface.	Saturation of the insulation products is an indication of a deficiency in the roof membrane that has permitted leakage. R-value and insulation integrity are degraded by the exposure and saturation of the product with moisture.	Moderate	Monitor



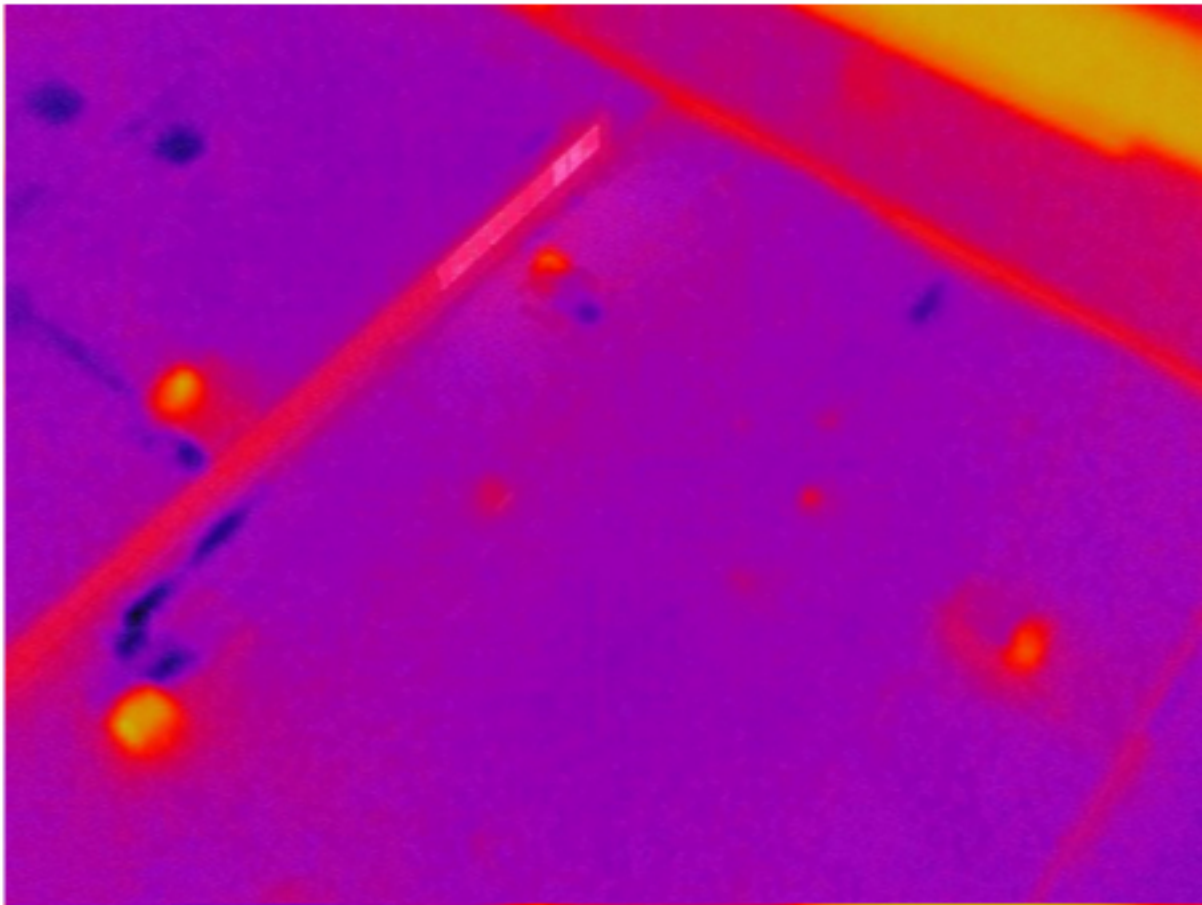
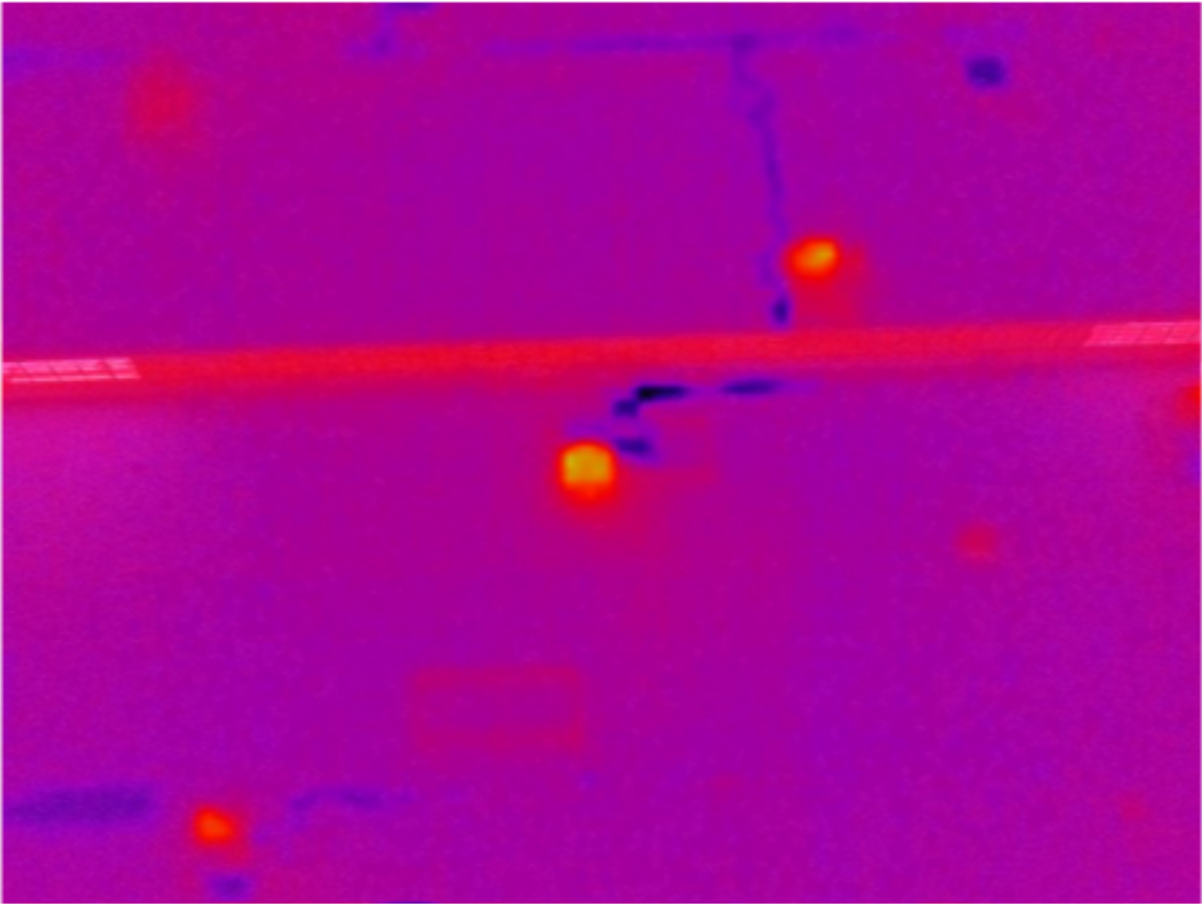
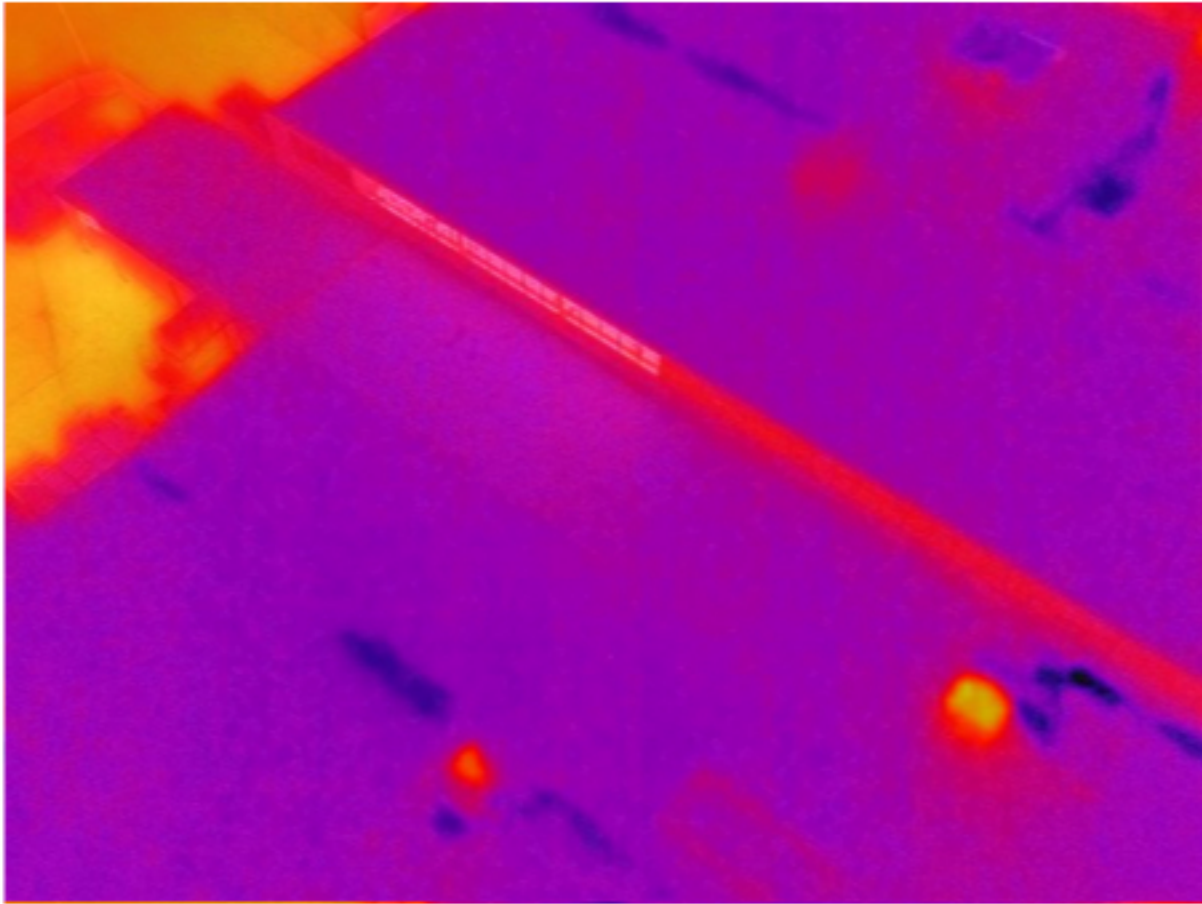
Section Issue #2 Deficiency #1

Deficiency	Description	Deficiency Effect	Severity	Action
Insulation saturation	Saturation of insulation products can be caused when water infiltrates the system at splits or holes in the roof surface.	Saturation of the insulation products is an indication of a deficiency in the roof membrane that has permitted leakage. R-value and insulation integrity are degraded by the exposure and saturation of the product with moisture.	Moderate	Monitor



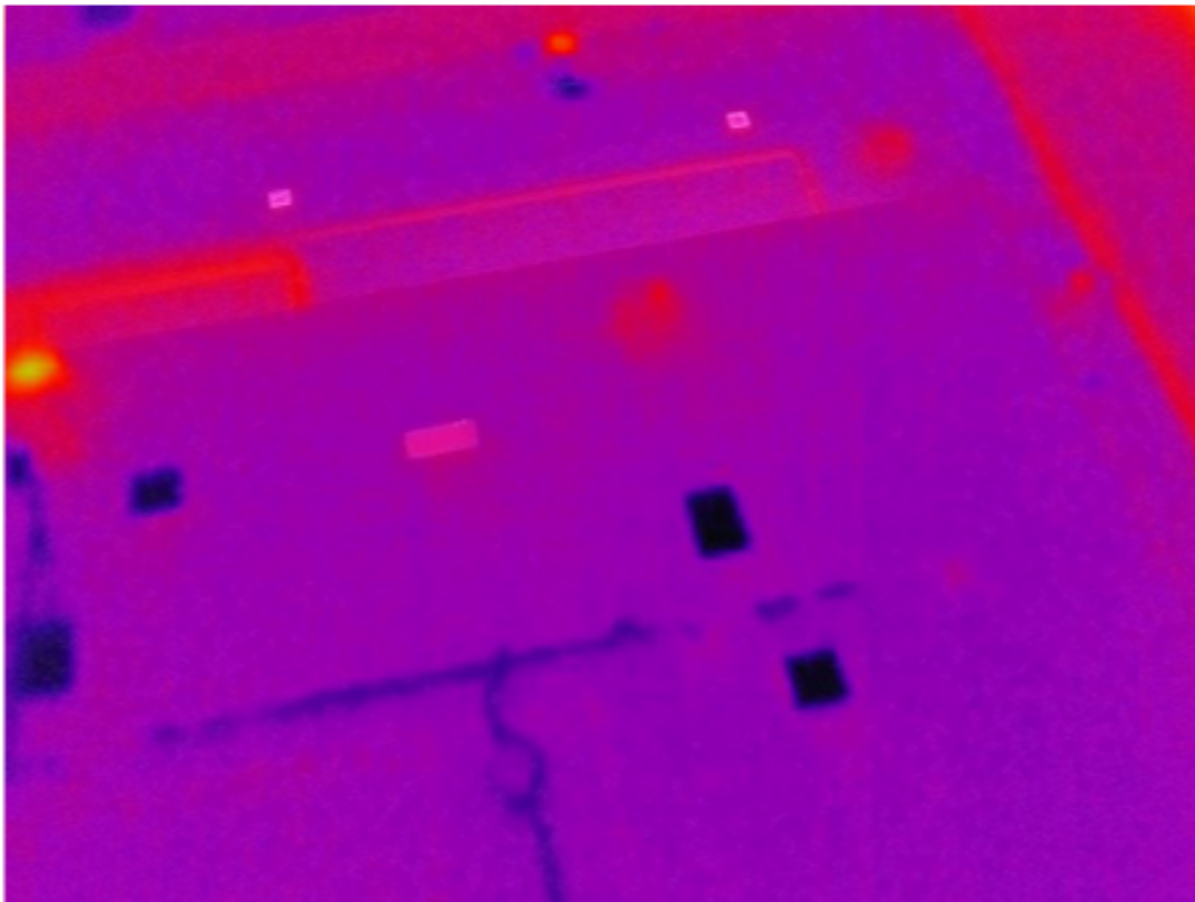
Section Issue #3 Deficiency #1

Deficiency	Description	Deficiency Effect	Severity	Action
Uninsulated Wall	The wall isn't insulated from the interior or exterior.	This will cause you to lose a significant amount of heat/air.	Moderate	Monitor



Section Issue #4 Deficiency #1

Deficiency	Description	Deficiency Effect	Severity	Action
Insulation saturation	Saturation of insulation products can be caused when water infiltrates the system at splits or holes in the roof surface.	Saturation of the insulation products is an indication of a deficiency in the roof membrane that has permitted leakage. R-value and insulation integrity are degraded by the exposure and saturation of the product with moisture.	Moderate	Monitor



Section Issue #5 Deficiency #1

Deficiency	Description	Deficiency Effect	Severity	Action
Insulation saturation	Saturation of insulation products can be caused when water infiltrates the system at splits or holes in the roof surface.	Saturation of the insulation products is an indication of a deficiency in the roof membrane that has permitted leakage. R-value and insulation integrity are degraded by the exposure and saturation of the product with moisture.	Moderate	Monitor

